



gazette

EXHIBITIONS & EVENTS
gainsborough.org/whats-on

Gainsborough's
House

July to
November
2024

Introduction to Gainsborough's House



© ROYAL ACADEMY OF ARTS, LONDON;
PHOTOGRAPHER: PRUDENCE CUMING ASSOCIATES LTD

- ▲ Thomas Gainsborough RA
Self-portrait of Thomas Gainsborough, R.A.
Oil on canvas, c.1787
Royal Academy of Arts, London



Gainsborough's House is the National Centre for one of Britain's most iconic artists. It is the childhood home of Thomas Gainsborough RA (1727–88) and contains the largest single concentration of his works in the world. Its mission is to promote the wider knowledge, appreciation and enjoyment of the art of Gainsborough both nationally and internationally. As John Constable wrote, 'the landscape of Gainsborough is soothing tender and affecting... On looking at them, we find tears in our eyes, and know not what brings them.'

In 2022, Gainsborough's House re-opened to the public after a £10m transformational refurbishment supported by The National Lottery Heritage Fund. This created a suite of galleries where we present exhibitions of historic and contemporary art and celebrate diversity through our programme. The redevelopment, designed by the acclaimed architectural firm ZMMA, has recently been awarded the prestigious RIBA East Building of the Year Award 2024.

Gainsborough's House consists of the Grade-I listed Georgian merchants' house; as well as the associated beautiful garden with its 400 year old mulberry tree. Our award-winning new-build contains exhibition galleries, including the Gainsborough Gallery, and a spectacular Landscape Studio for events and workshops. We also have a fully equipped Print Workshop running courses throughout the year, where artists work on-site to develop their practice. Not forgetting our shop and café serving retail and culinary delights.

Welcome

It's a great pleasure to introduce our summer and autumn seasons at Gainsborough's House.

For the summer we have the wonderful *Revealing Nature: The Art of Cedric Morris & Lett-Haines*, which is a must-see exhibition in exploring an important chapter in the story of British art and occurred right here in Suffolk. For the autumn, I can reveal our exciting collaboration with the Royal Academy. *The Image of the Artist: Portraits from the Royal Academy* which includes historic and modern paintings from Thomas Gainsborough to David Hockney. Alongside this, *Picture Perfect: A Century of Fashion Photography from the National Portrait Gallery* with work by Cecil Beaton, Irving Penn and Norman Parkinson. We also present the work of John Macfarlane, celebrated internationally as one of the leading designers of stage sets and costumes for Opera, Ballet and Theatre.

There are so many more things to do and explore so I look forward to welcoming you all in the coming weeks and months.

Calvin Winner
Executive Director,
Gainsborough's House

Contents

Current Exhibitions (until 3 November)

- Revealing Nature: The Art of Cedric Morris & Lett-Haines 2
- The Iris Florilegium of Sir Cedric Morris 3

Future Exhibitions

(from 16 November – 20 April 2025)

- The Image of the Artist: Portraits from the Royal Academy 4
- Picture Perfect: A Century of Fashion Photography from the National Portrait Gallery 5
- John Macfarlane & The Art of Theatrical Designs 5

Events & Lectures 6

Gainsborough Gallery 7

Thomas Gainsborough's childhood home 8

More than just a House

- Our Café and Garden 10
- Our Shop and Print Workshop 11
- The Landscape Studio 12

Families & Learning 13

My Favourite Gainsborough 14

Support Us 16



All details correct at time of going to press. Please check website for latest information and updates.
gainsborough.org



The Finnis Scott
Foundation

Revealing Nature: The Art of Cedric Morris & Lett-Haines

6 July – 3 November 2024

Cedric Morris
Foundation

PHILIP MOULD
& COMPANY

The Iris Florilegium of Sir Cedric Morris

6 July – 3 November 2024

Winner of the national Finnis Scott
Foundation Botanical Art Award.

Dr Siân Dawson inspired the idea and coordinated the illustrated catalogue of paintings called *Sir Cedric Morris Florilegium*. It is a book by leading botanical artists who painted the Florilegium of the unique award-winning irises bred by Sir Cedric Morris (1889–1982), artist and gardener who lived at Benton End, Hadleigh, Suffolk. Morris propagated the Benton End bearded irises between 1933 and 1960, now held in the National Plant Collection cultivated by Sarah Cook, horticultural expert and former head gardener at Sissinghurst, Kent.

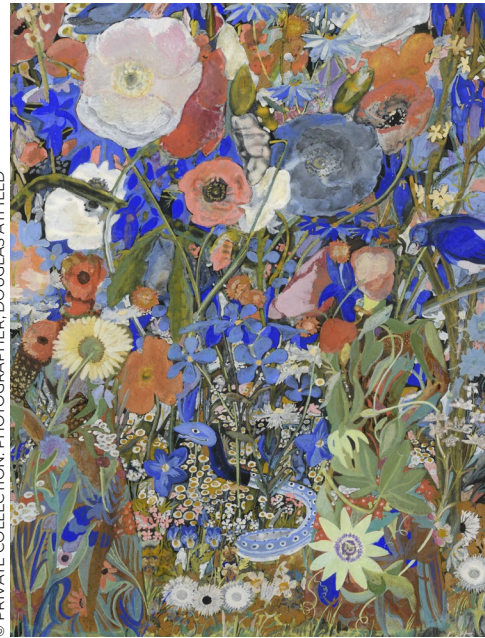
The *Florilegium* comprises 27 botanical watercolour paintings, meticulously observed and accurately recorded of known cultivated varieties of bearded iris growing today. Many of the artists are Gold Medal winners for Botanical Art from the Royal Horticultural Society.

Each artist explains their work in the accompanying caption. The Finnis Scott Foundation Botanical Art Award is the most valuable award of its kind. Dr Dawson was delighted to receive, on behalf of all the artists, such a prestigious award.

This exhibition is the first time the *Sir Cedric Morris Florilegium* collection has been displayed in full.

▼ Myumi Hashi
Benton Evora
Watercolour, 2019
Private Collection

► Gillian Barlow
Benton Hadleigh
Watercolour, 2019
Private Collection



This exhibition is the first to chart the phenomenal artistic careers of Cedric Morris (1889–1982) and Arthur Lett-Haines (1894–1978), who were partners in love and art for sixty years. With over eighty loans from Tate, the National Portrait Gallery and a wealth of private collections, the range of their art becomes apparent. Morris is celebrated not only for his flower paintings and still lifes but also for portraits and landscapes, and Lett-Haines is revealed as an important figure in developing Surrealist art in Britain. They famously met on Armistice Night in 1918 and spent the 1920s absorbing European Modernism in France, Italy and Germany, meeting a huge range of artists and writers. Their paintings, drawings and sculptures are highly distinctive and have a unique place



in the history of twentieth-century art. Based in Suffolk for most of their lives, primarily at Benton End, they established the East Anglian School for Painting and Drawing in 1937 which taught a generation of artists including Lucian Freud and Maggi Hambling.

The exhibition is sponsored by The Cedric Morris Foundation and Philip Mould & Company.

◀ Arthur Lett-Haines
Jeunes Filles Aux Fleurs
Watercolour, 1935
Private Collection

▲ Unknown
Cedric Morris with Arthur Lett-Haines and Rubio the parrot
c. 1929–36
Tate Collection

The Image of the Artist: Portraits from the Royal Academy

16 November 2024 – 20 April 2025

The exhibition considers the role of the artist by exploring images of Royal Academicians past and present which are going on display from the collection of the Royal Academy.

The works show how artists have sought either to reveal or disguise their identities, in both cases controlling how their image is presented.



▲ Chantal Joffe RA
Looking Towards Bexhill
Oil on canvas, 2016
Royal Academy of Arts, London

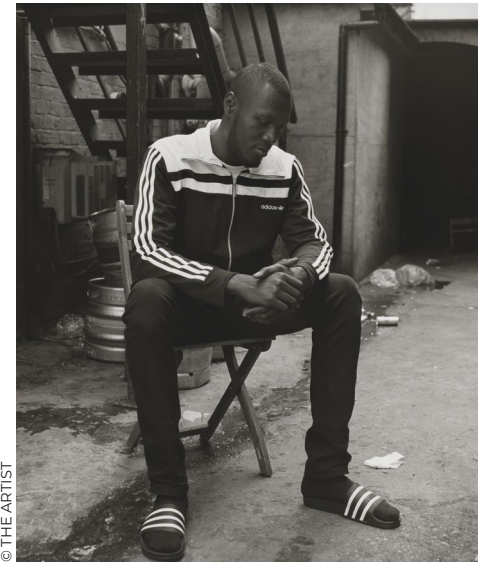
From the founding members of the Royal Academy such as Thomas Gainsborough RA and the huge group work by Henry Singleton, 1795 of forty Academicians to portraits of Patrick Proctor RA, Jean Cooke RA and David Hockney RA, this rich and thought-provoking exhibition provides an insight into the lives and identities of Britain's leading and celebrated artists.



▲ Nathaniel Hone RA
Self-portrait of Nathaniel Hone, R.A.
Oil on canvas, 1768
Royal Academy of Arts, London

Picture Perfect: A Century of Fashion Photography from the National Portrait Gallery

16 November 2024 – 20 April 2025



© THE ARTIST

This exhibition showcases the role that fashion plays in defining culture. These portraits have been captured by some of the world's most celebrated fashion photographers such as Cecil Beaton, Irving Penn, Norman Parkinson and Miles Aldridge. The subjects are all style icons over the last hundred years including the Beatles, Twiggy and Lily Cole. Fashion styles continually evolve and this display charts how fashion photography itself contributes to contemporary culture. The exhibition has been curated in collaboration with the National Portrait Gallery and is part of the Inspiring People project funded by the National Lottery Heritage Fund and the Art Fund.

▲ Olivia Rose
Stormzy
Gelatin silver print, 2016
National Portrait Gallery, London

John Macfarlane & The Art of Theatrical Designs

16 November 2024 – 20 April 2025

John Macfarlane, graduate from Glasgow School of Art, is an international stage and costume designer. He worked on designs for both operas and ballets. Among his most famous designs are the new *Swan Lake* for The Royal Ballet, *Frankenstein* for The Joffrey Ballet in Chicago, and *Tosca* for New York's Metropolitan Opera. The exhibition at Gainsborough's House is the opportunity to showcase a selection of his designs for operas and ballets.

▼ John Macfarlane
The Attavanti Chapel. Sant' Andrea Della Valle, Rome, preparatory drawing. Tosca Act 1. Metropolitan Opera, NY.
Pencil, crayon, and pastel on parchment paper, 2017
Private collection



© THE ARTIST

Events & Lectures

gainsborough.org/whats-on

Family events

Tom's Tuesdays

These are drop-in sessions running every Tuesday in the school holidays. £5 per child with up to two accompanying adults. Recommended age from 3–12 years.

Art in the Garden

23 July, 10am–1pm

Colourful Collage

30 July, 10am–1pm

Seeing with Cedric

6 August, 10am–1pm

Splendid Sculpture

13 August, 10am–1pm

Our Creative Space

20 August, 10am–1pm

Eye in the Sky

27 August, 10am–1pm

The Big Draw 2024

29 October, 10am–1pm

National Saturday Club

Free art classes for 13–16 year olds commencing in October 2024.

Talks

Benton End Remembered with Hugh St Clair

6 September, 6.30–8pm

Maggi Hambling in Conversation with Calvin Winner

26 October, 2–3pm

Still Lives: Curator Talk with Dr Patricia Hardy

3 October, 6–7pm

Art Classes

Life Drawing First Saturday of every month

3 August, 10am–4pm

7 September, 10am–4pm

5 October, 10am–4pm

2 November, 10am–4pm

Textile course Face to Face with Juliet Lockhart

15 September, 10am–4pm

29 September, 10am–4pm

13 October, 10am–4pm

Events

Breakfast Tours Revealing Nature: The Art of Cedric Morris & Lett-Haines

Exclusive exhibition tour with exhibition curator, Dr Patricia Hardy followed by hot drinks and croissants.

16 August, 9–10am

4 September, 9–10am

Florilegium Afternoon Tour with Dr Siân Dawson

20 September, 2.30–3.30pm

An Evening with Kate Sawyer Local Author of This Family

26 September, 6.30–8pm

Afternoon Tour Revealing Nature: The Art of Cedric Morris & Lett-Haines

An exhibition tour with exhibition curator, Dr Patricia Hardy.

18 October, 2.30–3.30pm

Gainsborough Gallery Thomas Gainsborough's masterpieces



© HUFTON + CROW

This signature gallery celebrates some of Thomas Gainsborough's greatest work.

The Gainsborough Gallery brings together over twenty portraits and landscapes made throughout his career from the collection at Gainsborough's House, as well as from public and private collections, including the National Portrait Gallery and Tate.

The works are hung against green silk damask, beautifully fabricated in Sudbury from authentic and exquisite

eighteenth-century pattern books. The gallery evokes the feel of a period gallery in a contemporary building.

This gallery demonstrates why Thomas Gainsborough remains one of Britain's most important artists.

Search our Collection Online to find out what is on display before your visit at gainsborough.org/collection



All details correct at time of going to press. Please check our website for latest information, prices, and to book. gainsborough.org/whats-on

Thomas Gainsborough's childhood home

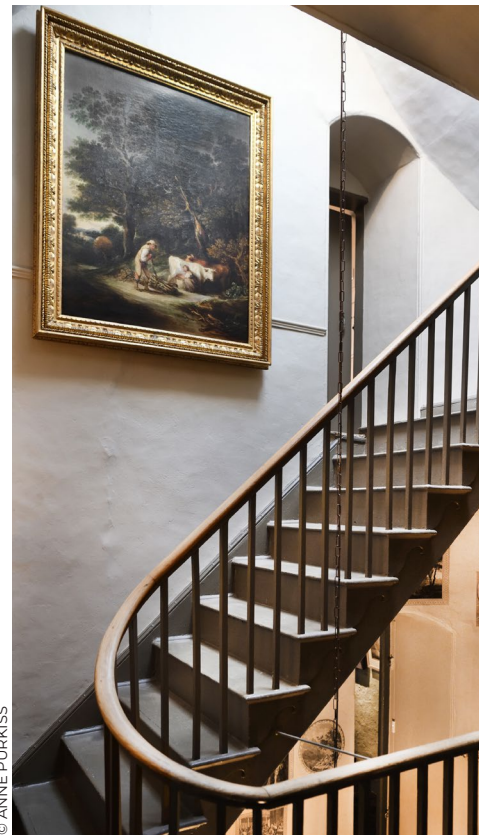
The permanent collection within the original Grade-I listed House tells the story of Gainsborough, his influences and legacy.

In 1958 Gainsborough's House Society was formed to purchase the Georgian house and establish it as a centre for Thomas Gainsborough. The museum opened to the public in 1961. Thomas Gainsborough's parents, John and Mary, moved here in 1722. The building was kept in family ownership until

1792, when it was sold at auction and described as 'a most excellent Brickt Mansion'. Today, the works on display encompass the whole career of Thomas Gainsborough, from early portraits and landscapes painted in Suffolk during the 1750s, to later works from his Bath and London periods.



© HUFTON + CROW



© ANNE PURKISS

The Livanos Study Room

Gainsborough's House now offers research access to our collections. Works not currently on display, books, and research materials can be viewed by appointment in the George John and Sheilah Livanos Study Room.

You can enquire about booking the space through our website: gainsborough.org/collection/livanos-study-room



© ANNE PURKISS

The early part of Gainsborough's career is mapped in the exquisite ParLOUR.

Experience the fascinating Finnis Scott Painting Room, showcasing painting, drawing and printmaking practice through the eighteenth century.

Discover Gainsborough's love of music in the Music Room on the first floor.

Suffolk-based artists, Cedric Morris and John Constable are also explored throughout the House.

Find our Room Books in the House to gain more insight into our collections.

You can also browse our Collection online before your visit: gainsborough.org/collection



© HUFTON + CROW

Our Café

The Watering Place café is open 10am to 5pm every day.

Enhance your Gainsborough's House experience by visiting our on-site café, open for visitors and the local community with:

- locally sourced, freshly prepared, seasonal food
- light lunches, cakes, pastries, and a wide range of snacks
- teas and coffees, chosen for quality and taste.

Whether you're here visiting and would like a bite to eat or you're in town and just passing by, our café and garden are open to all.

Our catering partner, Stellar Catering, also host an array of exciting events throughout the year.

Check our website for more details on how to book gainsborough.org/your-visit/the-watering-place-cafe

Stellar Catering Ltd



Our Garden



At the heart of our site, the courtyard garden with a 400-year-old Mulberry Tree, as well as a Quince and Medlar Tree, includes a new crinkle-crankle wall in the Suffolk vernacular manner, built of local handmade brick.

As part of an outreach project at HMP Hollesley Bay, prisoners carved their own bricks to embellish and enhance the red-brick design. A dedicated group of garden volunteers look after the heritage plot year round.

Our Shop

Our shop is located on the corner of Gainsborough Street and Weavers Lane. It is full of items for all ages – from unique gifts, books and souvenirs to toys, food and wine.

A visit to Gainsborough's House just wouldn't be complete unless you included the shop as part of your trip to Sudbury.

Just like the exhibitions and displays in the galleries, the products in the shop are also carefully curated. They might be inspired by a Gainsborough painting or a feature of our site, like the Mulberry Tree. When you are in Gainsborough's House shop, you can buy something that really connects you to your visit.

We ring the seasonal changes and try to bring you gifts you don't often see, in particular, our range of products inspired by Gainsborough's letters. He had a great way of summing up a situation in one sentence!

You can also see our range and shop online at gainsborough.org/our-shop



Print Workshop

We welcome artists, students and print enthusiasts of all abilities to our well-equipped, friendly and professional Print Workshop. Techniques available to explore include relief printing, etching, screenprinting and lithography.

The Print Workshop run specialised courses throughout the year to offer beginners an insight into new techniques or to invite experienced printmakers to elevate their skills.

gainsborough.org/print-workshop



Join our Print Workshop

As a Print Workshop member gain access and technical support, with basic materials included. You will also get priority booking for all courses.

Memberships start at just £120 for 3 months, perfect if you have a short project to complete or, £240 for an entire year of printmaking!

pws@gainsborough.org

Landscape Studio & Camera Obscura



© ANNE PURKISS

Landscape Studio

Experience panoramic views over Sudbury; Gainsborough's Suffolk countryside. Don't miss this vantage point on the top floor of the Galleries.

Camera Obscura

Our permanent Camera Obscura, situated in the stunning Landscape Studio and operated by volunteers allows visitors to gain a 360-degree view of Gainsborough's hometown and the landscapes which inspired him.

A predecessor to modern photography, come to Gainsborough's House to discover how this centuries-old contraption works.

For Camera Obscura opening times, please see our website gainsborough.org/your-visit

Hiring the studio

A beautiful yet functional space for community events, families, schools and corporate hire.

This room is available for hire in addition to the Hills Room, a multi-purpose space above the café. We welcome group and commercial bookings for this space. Catering for events can also be arranged.

For more information on how to hire the studio, please contact mail@gainsborough.org

Families & Learning

The Art Cart

What is there for families to do in the galleries? Our very special Art Cart provides exciting activities for all ages, all free of charge. Come and add to our community sketchbooks, make your own crafts or take an activity bag around the exhibitions – let's get creative together!

Tom's Tuesdays

For the whole family, Tom's Tuesdays run every Tuesday of the school holidays throughout the year. You can book in advance to secure a space or, simply drop-in to get involved with some creative fun for all ages.

During the summer holidays this year, explore nature and art in the garden, have a go at making your own collage, design and make sculptures, discover Cedric Morris's landscapes and explore our amazing Camera Obscura.

No need to book! £5 per child with up to two accompanying adults.

▼ THE ART CART



School visits

We offer a wide variety of workshops for all ages. These range from exploring our exciting Camera Obscura; printmaking, local history, and art, as well as a My First Gallery Visit session for our younger visitors in nursery. Secondary schools can also access gallery talks, workshops and specialist printmaking facilities.

There are further details about our school offer on our website gainsborough.org/learning/schools

Wooded Landscape with Herdsman Seated

by Vicki Merrick, *Learning Team Volunteer and printmaker*

'The painting I love most of his is one which shows the landscape that shaped Gainsborough's view of the world.

I have many works of Gainsborough that are dear to my heart, to name a few; the many portraits of his two daughters, *The Pitminster Boy*, as well as *Peter Darnell Muilman*, *Charles Crockatt* and *William Keable in a Landscape*. There is also the portrait of *Caroline Acton* of which I am very fond. However, if I had to choose one work, it is a landscape, one of Gainsborough's earliest, painted around 1746/7.

The influence of Dutch landscapes can be seen in the composition, what Gainsborough called "*imitations of little Dutch landskips*". The painted scene refers to the Suffolk landscape. The small groups of trees on the horizon and by the pool, beautifully observed.

This composition has what Gainsborough called, "*A little business for the eye*", with its many small details, all evoking Suffolk life

and surroundings. It includes a herdsman in the middle ground to the church, (St Mary the Virgin Church, Great Henny, Sudbury) and buildings in the distant background and the pool in the foreground, reflecting landscape and sky. The use of atmospheric perspective gives the feeling of space and, above all, is that wonderful sky.

Gainsborough's landscape paintings are not often topographical but truly evoke a feeling of place which was profoundly significant to him. As Constable said about Suffolk, "*I fancy I see Gainsborough in every hedge and hollow tree*" – and for me, this wonderful work reminds me of home.'



▼ Thomas Gainsborough
Wooded Landscape with Herdsman Seated
Oil on canvas, c.1746–7
Gainsborough's House

Purchased with an anonymous donation given through the National Art Collections Fund and the Gainsborough's House Society Development Trust and grants from the National Art Collections Fund, the MGC/V&A Purchase Grant Fund, the Esmée Fairbairn Charitable Trust and the Codrington Trust, 1990.

How you can help us

Gainsborough's House is a registered charity so without the support of generous individuals and organisations, we would be unable to display our distinguished and growing collections, realise our vibrant exhibition programme, or run our many learning programmes with a diverse array of young people.

Donate

Every donation we receive, no matter the size, helps to meet our running costs and programming to ensure there is something for everyone to enjoy. By making a gift, you can help make a vital contribution towards all of the work we do at the National Centre.

You can donate to Gainsborough's House via tickets.gainsborough.org

If you would prefer to donate a different way, please contact mail@gainsborough.org

We appreciate your support greatly.



Volunteer

As a registered charity, Gainsborough's House relies on the contribution of its amazing volunteers who help with a variety of roles across the whole site, including gallery stewarding, guided tours, learning workshops, administration, retail and events.

If you're interested in becoming a volunteer with us, please see our website for details on how to sign up: gainsborough.org/get-involved/volunteer



Membership

Gainsborough's House is a very special place that exists to promote the wider knowledge, appreciation, and enjoyment of the art of Thomas Gainsborough.

Your support will really make a difference, especially since our re-opening after a transformational refurbishment.

We offer a range of annual membership levels – enjoy the benefits and feel good knowing that being a Friend of Gainsborough's House helps keep us alive; we hope you'll join us on this journey!

Become a Friend from £45

Enjoy unlimited free admission to our collections and exhibitions and more.

Become a Medlar from £65

Including exclusive previews of our exhibitions and more.

Become a Quince from £100

Bring a free guest when you visit, enjoy free Breakfast Tours and more.



Become a Patron

Being a Patron at Gainsborough's House promotes heritage & culture in so many ways.

By supporting Gainsborough's House you are helping us to stage the world-class exhibitions and events of which we are so proud. You are helping us to maintain our Grade I-listed historic house, and enabling us to grow our activities and outreach programmes.

Like many of the UK's museums, only a quarter of our income comes from ticket sales. As a result, we rely enormously on the generosity of private individuals.

So please, become a Patron today. Without our Patrons' support, we simply wouldn't be where we are today, and certainly wouldn't be able to achieve all of the impressive things we are currently planning. At Gainsborough's House, your help will make a crucial difference.

For further details on becoming a Patron or Mulberry Patron of Gainsborough's House, please contact: patrons@gainsborough.org or phone 01787 372958

Please check our website for more information:

gainsborough.org/get-involved/



Admission

Opening times

Open every day 10am–5pm.

For holiday opening times, please check our website.

Tickets

Adults: £15 (without Gift Aid)

18's and under: Free

Membership: from £45

Contact us

Gainsborough's House
46 Gainsborough Street,
Sudbury, Suffolk CO10 2EU
(entrance on Weavers Lane)

01787 372958

mail@gainsborough.org
gainsborough.org

Follow us

@GainsboroughsHouse



Cover image:

Cedric Morris

Crisis

Oil on canvas, 1938

Private Collection,

Courtesy of Lyon & Turnbull



How to find us

Gainsborough's House is situated in Sudbury, in Suffolk. The House is on Gainsborough Street, but access to the main entrance, galleries, café and shop are on the adjacent Weavers Lane.



By train

- Travel to Sudbury.
- Trains from London Liverpool Street every hour.
- Station is a 10 minute walk.

By car

- Car parks: North Street, Kingfisher Leisure Centre and Sudbury Railway Station; all within 10 minutes walk.

Accessibility

gainsborough.org/your-visit/accessibility/

Charity no: 1170048
Reg'd Co. no: 10413978

© Gainsborough's House

gazette design: wilson-design.co.uk