

gazette

EXHIBITIONS & EVENTS
November 2023 – April 2024
gainsborough.org/whats-on

Gainsborough's
House



Thomas Gainsborough & Gainsborough's House



▲ Francesco Bartolozzi (1727–1815), after Thomas Gainsborough
SELF-PORTRAIT
Stipple engraving

Thomas Gainsborough (1727–88)

Thomas Gainsborough is one of the great figures of British and world art history, renowned not only in his advancement of portraiture to a higher level, but also in being one of the founders of the British school of landscape painting. As John Constable wrote, *'the landscape of Gainsborough is soothing tender and affecting... On looking at them, we find tears in our eyes, and know not what brings them.'*

The Historic House

The Grade-I listed building which is the birthplace and childhood home of Thomas Gainsborough.

The house has evolved from its late medieval origins and has seen a new Georgian façade added when the Gainsboroughs lived here in the 1720s, and a Regency extension on the back. Today as a museum it includes rooms about Thomas Gainsborough, John Constable, Cedric Morris, as well as a room that explore artistic practice in the eighteenth century. Each room has furniture, objects, and paintings that preserve the feeling of a house whilst telling the stories of Gainsborough and his artistic legacy.



THE HISTORIC GAINSBOROUGH'S HOUSE, © HUFTON + CROW

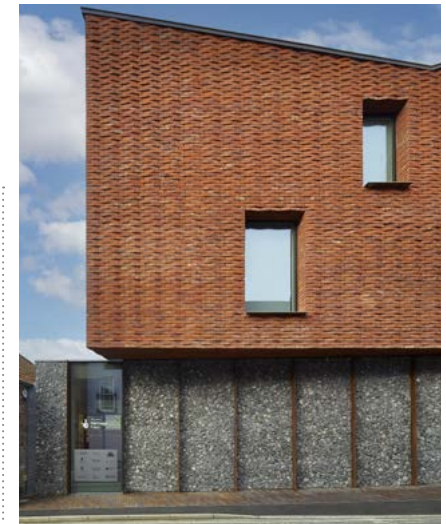
Welcome

Hello to you all. Welcome to the first issue of our new-look *gazette*, which we will produce at the beginning of every exhibition season, three times a year.

In it you'll find details of our exciting new exhibitions, our events and activities, our learning programme, our café offer, our ever-changing shop, and our forthcoming exhibition programme – plus some insights into our team and our paintings.

Across the centre pages is an easy-to-navigate summary of everything that's on offer this winter season. So please do book up and join us as often as you can! We'd be delighted to see you.

As you can see, we have some brilliant exhibitions and events coming up this winter – including the first-ever UK exhibition of the work of the President of the Royal Academy (and the President of our own museum, too),



THE NEW GALLERIES, © HUFTON + CROW

Rebecca Salter, and a delightful exploration of that master of satire and salacious shredder of reputations, James Gillray. These will be launched on 11 November and open to visitors every day (aside from the Christmas-to-New Year period) until 10 March. While tackling very different subject areas, the prominence of line and the importance of the printing process across both exhibitions makes for an intriguing relationship – one that I think you'll find fascinating.

So why not keep the ravages of winter at bay by enjoying the many things we have to offer here at Gainsborough's House. I do hope to see you very soon.

Dr Steven Parissien

Director, Gainsborough's House

Timothy & Mary Clode Gallery

James Gillray: Characters in Caricature

11 November 2023 – 10 March 2024

James Gillray (1756–1815) was Georgian Britain's funniest, most inventive and most celebrated graphic satirist. His work transcends his own time and has continued to influence his successors of the modern age, from David Low to Martin Rowson.

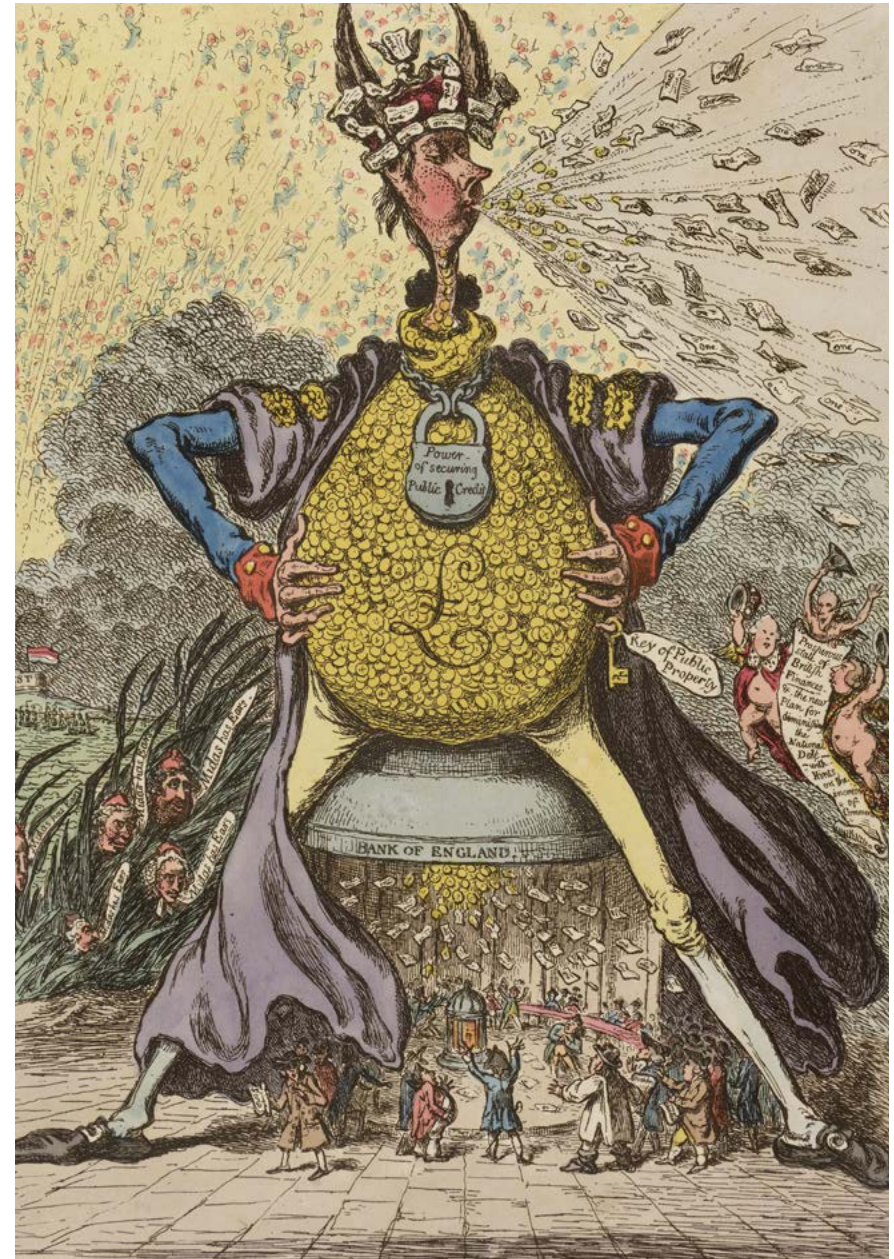


Tim Clayton, author of 2022's definitive biography of James Gillray, brings the master satirist to life in an astonishing, colourful and at times salacious exhibition, *James Gillray: Characters in Caricature*.

This lively and daring exhibition examines how Gillray exposed the most notorious scandals of his time by focusing on the artist's principal characters – household names to which he returned to again and again, from Emma Hamilton to the Emperor Napoleon.

- ▲ James Gillray (1756–1815)
THE PLUMB PUDDING IN DANGER
Hand-coloured etching
- ◀ James Gillray (1756–1815)
MANIAC-RAVING'S – OR – LITTLE BONEY IN A STRONG FIT (detail)
Hand-coloured etching

▼ James Gillray (1756–1815)
MIDAS, TRANSMUTING ALL,
INTO GOLD PAPER
Hand-coloured etching



Sudbury Gallery & David Pike Drawings Gallery

In View: Rebecca Salter at Gainsborough's House

11 November 2023 – 10 March 2024

Rebecca Salter PRA is an outstanding British artist who, in 2019, was elected as the first female President of the Royal Academy in London. She is also, by association, President of Gainsborough's House.

This thought-provoking and stimulating exhibition of Rebecca's recent work demonstrates how her artistic practice has been deeply rooted in traditional Japanese art, how it combines Eastern and Western traditions, and how print processes are central to the conception and execution of her work.

The principal exhibition is accompanied by a fascinating juxtaposition of works specially selected by the artist to hang alongside appropriate Gainsborough artworks from the House's own collection.

- ▶ AM20,
Mixed media on linen
- ▶ B12,
Mixed media on Japanese paper
- ▶ AB4, (far right)
Mixed media on linen



Gainsborough Gallery

Experience Thomas Gainsborough's masterpieces



THE GAINSBOROUGH GALLERY, © HUFTON + CROW

This signature gallery celebrates some of Thomas Gainsborough's greatest work.

The Gainsborough Gallery brings together over twenty portraits and landscapes made throughout his career from the collection at Gainsborough's House, as well as from public and private collections, including the National Portrait Gallery and Tate Britain.

The works are hung against green silk damask, beautifully fabricated in Sudbury from authentic eighteenth-century pattern books. The gallery evokes the feel of a period gallery in a contemporary building.

This gallery demonstrates why Thomas Gainsborough remains one of this country's most important artists.

Silk Gallery, Gainsborough's House Museum

History of silk weaving and Sudbury Silk

Today over 90% of Britain's woven silk is produced in Sudbury. The town's silk companies design and weave high-quality silk textiles for major fashion houses, stately homes and historic palaces.

The Silk Gallery explores the significant impact of Sudbury's heritage as the centre of silk weaving in Britain, alongside the Gainsborough family's history of weaving.



SILK SAMPLES IN THE SILK GALLERY, © ANNE PURKISS



THE SILK GALLERY, © HUFTON + CROW



Hall & Stairs,
Gainsborough's House Museum

Spiral of art

The stairwell features reproductions of eighteenth-century prints by and after Gainsborough, his contemporaries, and artists who influenced him.

The display is inspired by the pasted print rooms that became popular in the mid-eighteenth century, whereby society portraits, Arcadian landscapes, genre scenes and social satires were creatively juxtaposed.

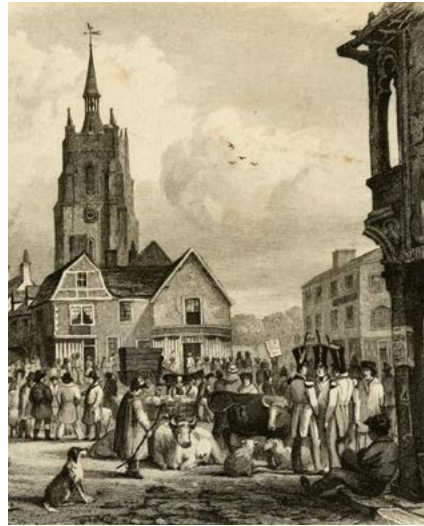
Look for the 'Hallway & Stairs' Room Sheet to discover the artworks on display.

THE HALLWAY & STAIRS, © ANNE PURKISS



Lift Gallery,
Gainsborough's House Museum

The history of Sudbury



Historic moments are explored in the diminutive Lift Gallery through rarely seen and exciting local works that map the development of Gainsborough's House and Sudbury from the eighteenth century to the present day.

▲ *Unknown artist*
SUDBURY MARKET HILL, 1840
Engraving

Winter Lecture Series

The Age of Gillray

Wednesdays at 5pm

Gain further insight to the exhibition, *James Gillray: Characters in Caricature* with our engaging and entertaining lecture series which looks not only at the inspired and salacious art of late Georgian satirist James Gillray, but also at the Britain in which he lived.

Subjects covered range from Gillray and George IV to Georgian fashion and the rise of British Gin.

Lectures

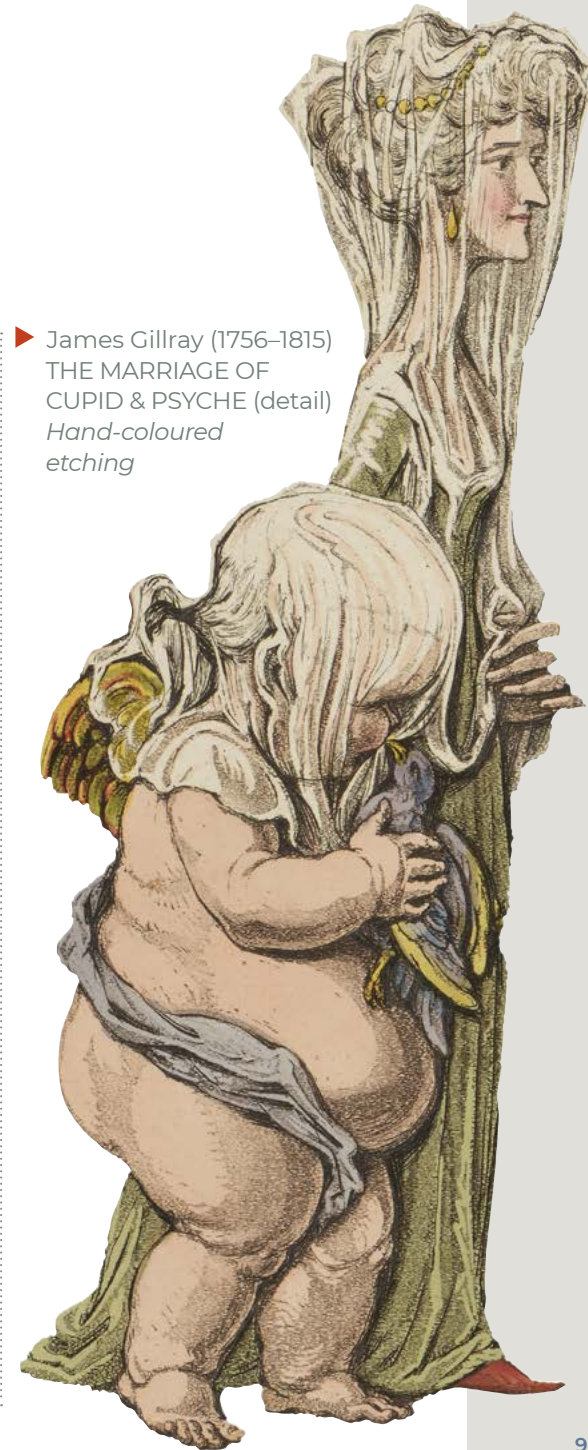
- On Wednesdays 5–6pm
- In the Landscape Studio
- £20 per lecture (Gin tasting lecture £30)
- 10% discount if you book all 10 lectures, £180

Dinner

- Following each of the lectures from 6–8pm in The Watering Place café
- Book direct with Collata Live as tables in café available on a first-come, first served basis
- Additional cost

Please see gainsborough.org for details on how to book the lectures and evening meals.

▶ James Gillray (1756–1815)
THE MARRIAGE OF
CUPID & PSYCHE (detail)
*Hand-coloured
etching*



15 November 2023*Tim Clayton*

An Evening with the Curator

The Curator of our James Gillray exhibition explains some of the key themes behind the show and explores the fascinating and murky world of the late Georgian satirist.

22 November*Martin Rowson*

Gillray and I

The celebrated, award-winning *Guardian* and *Mirror* cartoonist tells us why Gillray has been such a major influence.

29 November*Steven Parissien*

George IV's Patronage

Gainsborough House's Director demonstrates the wide range of George IV's cultural patronage – and the legacy he left us.

**6 December***Emma Boyd*

Georgian Charity

Gainsborough House's Keeper of Art explores the rise of charitable enterprise in Georgian England, focussing on three charities that both Gainsborough and Gillray would have been familiar with: the Foundling Hospital, the Marine Society, and the Magdalen Hospital.

13 December [starts 6pm]*Steven Parissien*

The Architecture of the Regency

Dr Parissien charts the extraordinary range and eclecticism of architecture during the time of Gillray's career.

10 January 2024*Georgina Lock*

Hannah Snell: A Female Soldier

A working-class woman who disguised herself as a man to join the Royal Marines and fight in India in 1749. This entertaining performance traces Hannah's astonishing life and career.

◀ James Gillray (1756–1815)
THE INTRODUCTION
Hand-coloured etching

17 January*Steven Parissien*

Thomas Lawrence: The Art of the Image

The greatest-ever royal image maker's fascinating career is examined in the context of Gillray's Britain.

24 January*Kate Teyssier*

Undressing the Dress

This fascinating workshop deconstructs a genuine Georgian dress, literally, and reveals much about the textiles of the period and the women who wore these increasingly colourful and elaborate clothes.

31 January*Steven Parissien*

Nelson's Navy (with rum ration)

Why was Britain's navy in the late Georgian era so successful? Dr Parissien looks behind the halyards to find the secret of naval success.

▶ James Gillray (1756–1815)
LA DERNIERE RESSOURCE
– OR – VAN BUCHELLS
GARTERS (detail)
Hand-coloured etching

7 February*Steven Parissien*

A History of Gin (with gin tastings)

A history of Mother's Ruin from Gin Lane to today's sophisticated drink, complete with gin tastings. (Please note that the cost of this lecture will be £30 to cover the price of the various gins.)

Please note that lecture titles may change. Booking essential.

To book any of these lectures, gainsborough.org/whats-on



Timothy & Mary Clode Gallery

Philip de László: Master of Elegance

23 March – 23 June 2024

In March 2024 *Philip de László (1869–1937): Master of Elegance* opens at Gainsborough's House curated by the De Laszlo Archive Trust.

De László was already one of the most famous portrait painters in Europe when he decided to settle in England in 1907.



His relentless energy, charisma and pursuit of perfection in his art saw his circle of patronage widen from Budapest, the city of his birth, via the princely houses of Europe. London attracted him as a city immersed in a golden age and the work he produced there during the next thirty years is bursting with vitality and virtuosity. The period is brought to life through portraiture and landscapes and features a section on his experiences during the First World War.

The exhibition will feature rarely seen loans from private collections as well as important works from the Royal Collection, including a childhood portrait of Queen Elizabeth II when Princess of York.

▶ Charles Mosley (fl. 1725–75), after Hubert-François Gravelot (1699–1773)
THÉODORE VON NEUHOFF
Etching and engraving

◀ Philip De Laszlo (1869–1937)
SASSOON, SIR PHILIP ALBERT
GUSTAVE DAVID, 3RD BARONET
Oil on canvas

Sudbury Gallery

Hubert-François Gravelot: Designing the Georgian Book

23 March – 23 June 2024

Gainsborough's House is fortunate to hold the largest collection of drawings and prints by Gravelot in the UK, second only to the British Museum's collection. The exhibition will dwell on his book illustrations. He designed the illustrations for over fifty books both in France and in Britain. His bravura in creating elegant scenes full of details in the small space of a page made his work famous.

Well-known authors of the time such as Jean-Jacques Rousseau, Voltaire or Henry Fielding, specifically asked him for the illustration of their books.



▼ Louis Truchy (before 1731–64), after Hubert-François Gravelot (1699–1773)
STUDY OF A GENTLEMAN,
FROM A SERIES OF 'FIGURES
DE MODES'
Etching



Exhibitions, events & lectures

Calendar 2023–24

INFORMATION, PRICES & BOOKING: gainsborough.org/whats-on

	NOV	DEC	JAN 2024	FEB	MAR	APR
EXHIBITIONS						
James Gillray: Characters in Caricature 11 November – 10 March 2024	█					
In View: Rebecca Salter at Gainsborough's House 11 November – 10 March 2024	█					
Philip de László: Master of Elegance 23 March – 23 June 2024					█	█
Hubert-François Gravelot: Designing the Georgian Book 23 March – 23 June 2024					█	█
Gainsborough Gallery Permanent	█					
Silk Gallery Permanent	█					
FAMILY EVENTS (10am–1pm, drop in, standard admission)						
Elves workshop 2 December – Become an elf in our festive workshop		█				
Tom's Tuesdays: 'Salter's Monochrome world' 20 February 2024 – Discover Rebecca Salter's mesmerising lines, prints, and patterns					█	
Tom's Tuesdays: 'Spring is sprouting' 2 April – Celebrate spring						█
Tom's Tuesdays: 'Famous Faces' 9 April – From Presidents and Princesses to actors and aristocrats						█
EVENTS (see website for latest details)						
Evening Meal with Pianist 24 November – 6–9.30pm. Book with café, £40 per ticket		█				
LECTURES (5pm–6pm, £20 per lecture or £180 for all 10. Dinner available from 6pm, book with café)						
An Evening with the Curator 15 November	█					
Gillray and I 22 November		█				
George IV's Patronage 29 November		█				
Georgian Charity 6 December		█				
The Architecture of the Regency 13 December			█			
Hannah Snell: A Female Soldier 10 January 2024			█			
Thomas Lawrence: The Art of the Image 17 January				█		
Undressing the Dress 24 January				█		
Nelson's Navy (with rum ration) 31 January					█	
A History of Gin (with gin tastings) 7 February				█		

All details correct at time of going to press. Please check website for latest information and updates.

The Gainsborough's House shop

Liz Cooper, our Commercial Manager, describes how she selects and stocks items that are available in our shop.

The approach to stocking a gift shop in a heritage site can be taken in many ways. Sometimes as a buyer, you are restricted to large-organisation, branded products or, you have absolutely no restrictions and can simply choose whatever you fancy. I apply an approach somewhere in the middle.

Just like the exhibitions and displays in the galleries are carefully curated, the products in the shop are also carefully curated. They are selected to enhance ranges which might be inspired by a Gainsborough painting or a feature of our site, like the Mulberry Tree. When you are in Gainsborough's House shop, you can buy something that really connects you to your visit.

For example – I select a painting or a feature – say a Gainsborough painting on loan, depicting a figure on a horse with a background of a hay cart, church and duck pond. A quintessentially English scene



© ANNE PURKISS

with a colour palette of greens, pale pinks and yellows. The figure is relaxing on the horse in the sunshine and another horse has his head on the flank of the first. This got me thinking; lazy Sunday afternoons in the garden and so this became a range of relaxing with a deckchair, cushions, throws, reading books, and sketchbooks. The colour hues of the painting were used as a clear reference for each product.

We bought delicious wine from our two local vineyards and organic Perry from further afield. Gainsborough once wrote to a customer *"I took the liberty of sending you a little Perry out of Worcestershire, and when the Weather settles in hot again, should be much obliged if you and Mrs Pearce would*

"Just like the exhibitions and displays in the galleries are carefully curated, the products in the shop are also carefully curated."



THE GAINSBOROUGH'S HOUSE SHOP, © ANNE PURKISS

drink a little of it and fancy it Champagne for my sake."

Buying gifts for the shop is easy, there is a never-ending supply of inspiration. We ring the seasonal changes and try to bring you gifts you don't often see. In particular, our range of products inspired by Gainsborough's Letters is a nice link, he had a great way of summing up a situation in one sentence!

We have a focus on reducing single-use plastic and work with suppliers who support other organisations in an ethical way or have an environmental approach that we like. This is very important to us.

There's usually a story with most of our products – why not ask us next time you are in the Shop?

gainsborough.org/our-shop

The Watering Place and Crinkle Crankle Wall

Our café and gardens

Our café

The Watering Place café is open 9.30am to 5pm every day.

Enhance your Gainsborough's House experience by visiting The Watering Place café, now open for visitors and the local community with:

- locally sourced, freshly prepared, seasonal food
- light lunches, cakes, pastries, afternoon tea and a wide range of snacks
- teas and coffees, chosen for quality and taste



© ANNE PURKISS

Whether you're here visiting and would like a bite to eat or you're in town and just passing by, our café and terrace are open to all.

Our catering partner, Collata Live, also host an array of exciting events throughout the year. Check our website for more details on how to book.

Our gardens

At the heart of our site, the courtyard garden with a 400-year-old mulberry tree and quince tree includes a new crinkle-crankle wall in the Suffolk vernacular manner, built of local handmade brick.

As part of an outreach project at HMP Hollesley Bay, prisoners carved their own bricks to enhance the red-brick design.



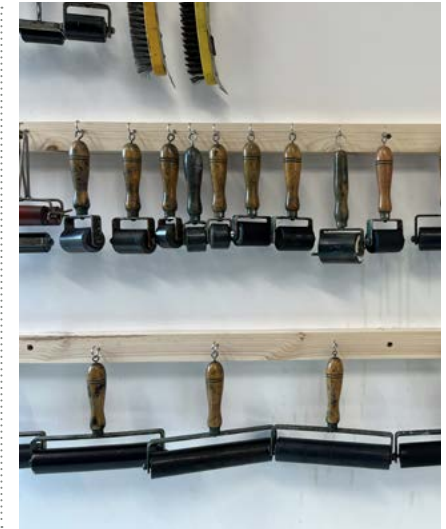
Print Workshop

Create your own masterpieces

Gainsborough's House welcomes artists, students and print enthusiasts of all abilities to its well-equipped, friendly and professional Print Workshop. Techniques available to explore include relief printing, etching, screenprinting and lithography.

The Print Workshop run specialised courses throughout the year to offer beginners an insight into new techniques or to invite experienced printmakers to elevate their skills.

Find out more gainsborough.org/print-workshop

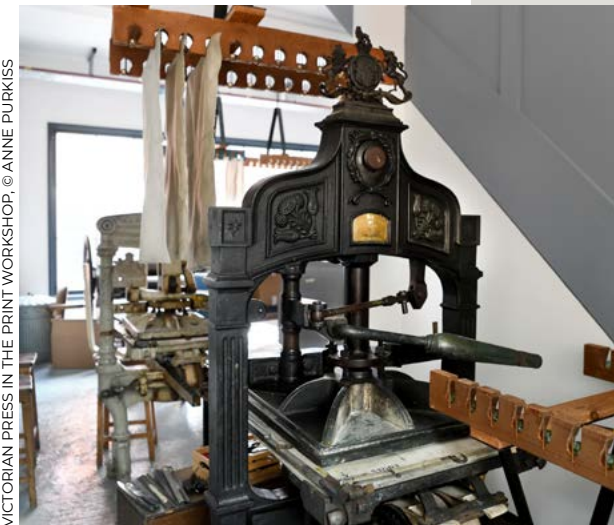


Join our Print Workshop

Join as a Print Workshop member today to gain access as well as technical support—basic materials are included. Members also get priority booking for all courses.

Memberships start at just £120 for 3 months, perfect if you have a short project to complete or, £240 for an entire year of printmaking!

VICTORIAN PRESS IN THE PRINT WORKSHOP. © ANNE PURKISS



Landscape Studio

Stunning views

Experience panoramic views over Sudbury, Gainsborough's Suffolk countryside.

Our new permanent Camera Obscura, situated in the stunning Landscape Studio, allows visitors to gain a 360-degree view of Gainsborough's hometown and the landscapes which inspired him. A predecessor to modern photography, discover how this centuries-old contraption works.

For Camera Obscura opening times, please see our website gainsborough.org/your-visit

THE LANDSCAPE STUDIO VIEW, © ANNE PURKISS



© ANNE PURKISS



Hiring the studio

A beautiful yet functional space for community events, families and schools to further enrich their visitor experience.

This room is available for hire in addition to the Hills Room, a multi-purpose space above the café. We welcome group and commercial bookings for this space. Catering for events can also be arranged.

For more details, please contact FrontOfHouse@gainsborough.org

The Museum

Thomas Gainsborough's childhood home

The oldest visible element of the House is an oak doorway leading into the entrance chamber, which may date back to as early as 1490. Thomas Gainsborough's parents, John and Mary, probably moved here in 1722. The building was kept in family ownership until 1792, when it was sold at auction and described as 'a most excellent Brickt Mansion'.

The permanent collection within the original Grade-I listed House tells the story of Gainsborough, his influences and legacy. Gainsborough's early career is mapped in the exquisite Parlour. Experience the Finnis Scott Painting Room in all its glory, showcasing painting, drawing and printmaking practice through the eighteenth century.

Discover Gainsborough's love of music in the Music Room on the first floor.

Other Suffolk-based artists are explored throughout the House including John Constable and Cedric Morris.

Find our Room Sheets and Books in the House to gain more insight into our collections.



© ANNE PURKISS



© HUFTON + CROW



© HUFTON + CROW



© ANNE PURKISS



© ANNE PURKISS

For younger visitors

Education & families

The Art Cart

What is there for families to do in the galleries? Our very special Art Cart provides exciting activities for all ages, all free of charge. Add to our community sketchbooks, make your own crafts or take an activity bag around the exhibitions – let's get creative!

Tom's Tuesdays

In addition to our family gallery resources, we run a drop-in family event every Tuesday in the school holidays. These creative and friendly art and craft sessions are available at no extra cost and offer a range of activities for all ages.



Saturday Art Clubs

Coming soon... a new club for budding young artists from 7-11 yrs old. This is an opportunity to create alongside a professional artist – for kids only!

Our offer for schools

We have been delighted to welcome back so many schools to Gainsborough's House and to introduce a number of new schools to our fantastic new gallery building and refurbished Historic House.

We offer a wide variety of workshops for all ages. These range from exploring our exciting new camera obscura; printmaking, local history, and art, as well as a My First Gallery Visit session for our younger visitors. Secondary schools can also access gallery talks, workshops and specialist printmaking facilities.

There are further details about our school offer on our website gainsborough.org/learning/schools/

◀ THE ART CART

My Favourite Gainsborough

The Pitminster Boy

Linda Hawes, volunteer room steward

One of the first and, in my opinion, most intriguing pictures to catch your eye as you walk into the the House is positioned right above the fireplace – *The Pitminster Boy*.

It is a modest, oval vignette of 'A Boy's Head', familiarly named after a Somerset village where Gainsborough was possibly on a sketching trip. It is an informal, naturalistic head-and-shoulder portrait of what could be a young apprentice handing the artist his brushes. However, I like to think there's more to the story, and credit must go to Richard Powell for planting the seed of an idea in my mind.

The boy seems to me to have been caught in the act of having a go with the artist's materials in his absence and has been startled by his master's early return! His expression has been perfectly captured in that instant – the dropped jaw, the wide eyes looking up anxiously in the dim glow of the painting room, knowing he's been rumbled! The warmth and intimacy of this portrait seems to indicate that Thomas was both touched

and amused by the boy's curiosity, even encouraging of it. Perhaps – and I would love to believe it – because the subject is none other than his own nephew, Gainsborough Dupont. It is unproven, however, as the picture is both unnamed and uncommissioned. Such is Thomas Gainsborough's genius for portraying likeness, it does bear a striking resemblance to a later, verified portrait of Gainsborough Dupont of around 1775 in similar profile, and others. It is known that Thomas used his nephew as a model on occasions. Given Thomas Gainsborough's dislike of 'this curs'd face business', *The Pitminster Boy* is painted with the kind of affection, swiftness and freedom reserved for his own family members.

► Thomas Gainsborough (1727–88)
THE PITMINSTER BOY (PORTRAIT
OF GAINSBOROUGH DUPONT)
Oil on canvas



How you can help

Support us

Donating

Without the support of generous individuals and organisations, we would be unable to display our distinguished and growing collections, realise our vibrant exhibition programme, or run our many learning programmes with a diverse array of young people. Every donation we receive, no matter the size, helps to meet our running costs and programming to ensure there is something for everyone to enjoy. By making a gift, you can help make a vital contribution towards our work.

Volunteering

As a registered charity, Gainsborough's House relies on the contribution of its amazing volunteers who help with a variety of roles across the whole site, including gallery stewarding, guided tours, learning workshops, administration, retail and events.

If you're interested in becoming a volunteer with us, please see our website for details on how to sign up: gainsborough.org/get-involved/volunteer

gainsborough.org/get-involved

Become a Friend

Gainsborough's House is a very special place that exists to promote the wider knowledge, appreciation, and enjoyment of the art of Thomas Gainsborough.

Your support will really make a difference, especially since our re-opening after a transformational refurbishment.

We offer a range of annual membership levels – enjoy the benefits and feel good knowing that being a Friend of Gainsborough's House helps keep us alive; we hope you'll join us on this journey!

- Become a Friend from £45: enjoy unlimited free admission to our collections and exhibitions and more
- Become a Medlar from £65: exclusive previews of our exhibitions and more
- Become a Quince from £100: bring a free guest when you visit and more

Become a Patron

Being a Patron at Gainsborough's House promotes culture in so many ways.

By supporting Gainsborough's House you are helping us to stage the world-class exhibitions and events of which we are so proud. You are helping us to maintain our Grade I-listed historic house as well as the splendid, 2022 extension, and enabling us to grow our activities and outreach programmes.

Like many of the UK's museums, only a quarter of our income comes from ticket sales. As a result, we rely enormously on the generosity of private individuals.

So please, become a Patron today. Without our Patrons' support, we simply wouldn't be where we are today, and certainly wouldn't be able to achieve all of the impressive things we are currently planning. At Gainsborough's House, your help will make a crucial difference.

For further details on becoming a Patron of Gainsborough's House, please contact patrons@gainsborough.org or 01787 372958



Cover image:
James Gillray (1756–1815)
A VOLUPTUARY UNDER THE
HORRORS OF DIGESTION
Hand-coloured etching

OPEN

Open every day 10am–5pm

CLOSED

Between Christmas and the New Year,
Good Friday

ADMISSION (with Gift Aid)

Adults: £16.50

18's and under: Free

Gainsborough's House

46 Gainsborough Street,
Sudbury, Suffolk CO10 2EU
(entrance on Weavers Lane)

01787 372958

mail@gainsborough.org

gainsborough.org

FOLLOW US ON SOCIAL MEDIA

@GainsboroughsHouse



ACCESSIBILITY

For further information, please see:
gainsborough.org/your-visit/accessibility/

Charity no: 1170048 Reg'd Co. no: 10413978

© Gainsborough's House

Design: wilson-design.co.uk

Gainsborough's House

Travelling to Sudbury

How to find us

Gainsborough's House is situated in the town centre of Sudbury, in Suffolk. The House is on Gainsborough Street, but access to the main entrance, galleries, café and shop are on the adjacent Weavers Lane.



By train

- Sudbury Railway Station.
- Trains from London Liverpool Street every hour.
- Station is a 10 minute walk.

By car

- Limited on-street spaces on Gainsborough's Street.
- Car parks: North Street, 3 hours free. Kingfisher Leisure Centre and Sudbury Railway Station, very reasonable all day rates.
- Accessible parking, please contact us.

