

gazette

EXHIBITIONS & EVENTS
gainsborough.org/whats-on

Gainsborough's
House

April
to July
2024



Thomas Gainsborough & Gainsborough's House



▲ Francesco Bartolozzi (1727–1815), after Thomas Gainsborough
SELF-PORTRAIT
Stipple engraving



Thomas Gainsborough (1727–88)

Thomas Gainsborough is one of the great figures of British and world art history, renowned not only in his advancement of portraiture to a higher level, but also in being one of the founders of the British school of landscape painting. As John Constable wrote, *'the landscape of Gainsborough is soothing tender and affecting... On looking at them, we find tears in our eyes, and know not what brings them.'*

The Historic House

The Grade-I listed building which is the birthplace and childhood home of Thomas Gainsborough.

The house has evolved from its late medieval origins and has seen a new Georgian façade added when the Gainsboroughs lived here in the 1720s, and a Regency extension on the back. Today as a museum it includes rooms about Thomas Gainsborough, John Constable, Cedric Morris, as well as a room that explores artistic practice in the eighteenth century. Each room has furniture, objects, and paintings that preserve the feeling of a house whilst telling the stories of Gainsborough and his artistic legacy.

More than just a house

In November 2022, Gainsborough's House re-opened to the public after a transformational refurbishment and new build supported by The National Lottery Heritage Fund. The project *Reviving an Artist's Birthplace* brought to life the site as the international centre for Thomas Gainsborough and is now the largest gallery in Suffolk.

Welcome

Welcome to the second issue of our new-look *gazette*, heralding the new spring season.

Inside you'll find details of our colourful new exhibitions, events and activities (including the fascinating courses being offered by the Print Workshop), our learning programme, The Watering Place café offer and our ever-changing shop – plus some insights into our team and collections.

Along with the new exhibitions I'm delighted to welcome our new catering partner, locally-based Stellar Catering. In the ensuing months we are planning an exciting new series of café and event menus – so keep a close watch on our website to find out what's coming up.

Across the centre pages, as always, is an easy-to-navigate summary of everything that's on offer this season. So please do book up and join us as often as you can! We'd be delighted to see you.

Please remember, too, that 18's and under get free admission to the National Centre. So bring your family or your friends for an unforgettable day out.

Best wishes – and hope to see you very soon.

Dr Steven Parissien

Interim Director, Gainsborough's House

Contents

Current Exhibitions	2
Permanent Exhibitions	6
Events & Lectures	7
Future Exhibitions	10
Events Calendar	12
The Museum	14
Our Café	16
Our Garden	16
The Gainsborough's House Shop	17
The Landscape Studio & Camera Obscura	18
Meet the Team	20
Families & Learning	21
My favourite Gainsborough	22
Support Us	24



All details correct at time of going to press. Please check website for latest information and updates.

Timothy & Mary Clode Gallery + Sudbury Gallery

Philip de László: Master of Elegance

23 March – 23 June 2024

In March 2024 *Philip de László: Master of Elegance* opens at Gainsborough's House curated by the De Laszlo Archive Trust.

De László (1869–1937) was already one of the most famous portrait painters in Europe when he decided to settle in England in 1907. His relentless energy, charisma and pursuit of perfection in his art saw his circle of patronage widen from Budapest, the city of his birth, via the princely houses of Europe. London attracted him as a city immersed in a



golden age and the work he produced there during the next thirty years is bursting with vitality and virtuosity. The period is brought to life through portraiture and landscapes and features a section on his experiences during the First World War.

The exhibition will feature rarely seen loans from private collections as well as important works from the Royal Collection, including a childhood portrait of Queen Elizabeth II when Princess of York.

- ▲ MRS PHILIP DE LASZLO, NÉE LUCY GUINNESS, WITH YANG
Oil on canvas
- ◀ SASSOON, SIR PHILIP ALBERT GUSTAVE DAVID, 3RD BARONET
Oil on canvas
- ▶ MRS ARCHIE GRAHAM, NÉE DOROTHY SHUTTLEWORTH
Oil on canvas



David Pike Drawings Gallery

Hubert-François Gravelot: Designing the Georgian Book

23 March – 23 June 2024

Gainsborough's House is fortunate to hold one of the largest collections of drawings and prints by Gravelot in the UK, second only to the British Museum's collection. The exhibition will focus on his book illustrations. He designed the illustrations for over fifty books both in France and in Britain. His bravura in creating elegant scenes full of details in the small space of a page made his work famous.

Well-known authors of the time such as Jean-Jacques Rousseau, Voltaire or Henry Fielding, specifically asked him for the illustration of their books.

▼ FRONTISPIECE TO
'THE HEADS OF ILLUSTRIOUS
PERSONS OF GREAT BRITAIN'
Published by John and
Paul Knapton
Engraving



Mulberry Room

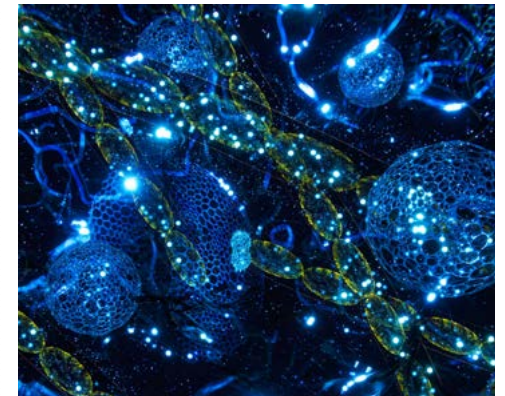
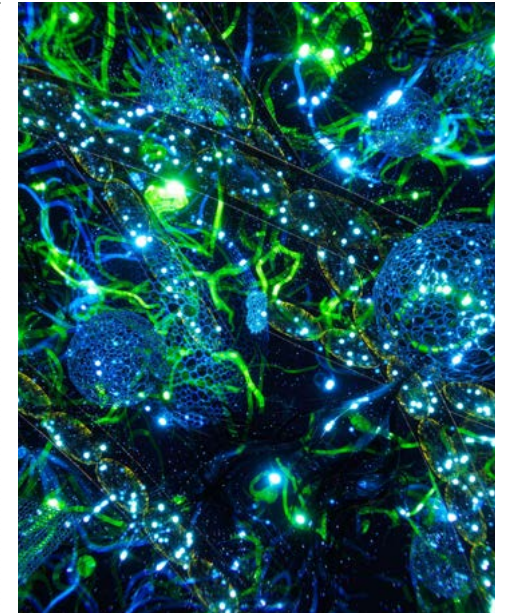
Henry Driver Water Portals

23 March – 23 June 2024

Water Portals is a digital artwork exploring the microscopic world of water. Discover the beautiful microbes that live in our rivers, lakes and seas, and understand the crucial roles they play in creating a healthy world. Explore how these important microbes are at risk from climate change, and what simple things we can do to make a difference. *Water Portals* was commissioned by Level Centre and funded by Arts Council England.

Water Portals is a project by Suffolk-born artist Henry Driver. He is a digital artist and game developer and works from his Suffolk studio. He creates projects that connect us to our environment and presents achievable responses to climate change. He has shown work across the world in Australia, Canada, Europe, India, Japan, South Korea, the USA, Turkey and Taiwan. His videos have been broadcast on TV in over 40 countries. While in the UK, Driver has shown at galleries such as Tate Liverpool, Tate Britain, Whitechapel & Barbican, as well as receiving commissions from BBC Arts, Red Bull, and the EU Social Fund.

► Henry Driver (b. 1993)
WATER PORTALS
Digital



Gainsborough Gallery, Galleries

Experience Thomas Gainsborough's masterpieces



© HUFTON + CROW

This signature gallery celebrates some of Thomas Gainsborough's greatest work.

The Gainsborough Gallery brings together over twenty portraits and landscapes made throughout his career from the collection at Gainsborough's House, as well as from public and private collections, including the National Portrait Gallery and Tate Britain.

The works are hung against green silk damask, beautifully fabricated in Sudbury from authentic and exquisite eighteenth-century pattern books. The gallery evokes the feel of a period gallery in a contemporary building.

This gallery demonstrates why Thomas Gainsborough remains one of Britain's most important artists.

Search our Collection Online to find out what is on display before your visit at gainsborough.org/collection

Silk Gallery, Museum

History of silk weaving and Sudbury Silk

Today over 90% of Britain's woven silk is produced in Sudbury. The town's silk companies design and weave high-quality silk textiles for major fashion houses, stately homes and historic palaces.

The Silk Gallery explores the significant impact of Sudbury's heritage as the centre of silk weaving in Britain, alongside the Gainsborough family's history of weaving.



© HUFTON + CROW



© ANNE PURKISS

Hall & Stairs, Museum

Spiral of art

The stairwell features reproductions of eighteenth-century prints by and after Gainsborough, his contemporaries, and artists who influenced him. The display is inspired by the pasted print rooms that became popular in the mid-eighteenth century, whereby society portraits, Arcadian landscapes, genre scenes and social satires were creatively juxtaposed.

Look for the 'Hallway & Stairs' Room Sheet to discover more details about the artworks on display.



© ANNE PURKISS

Lift Gallery, Museum

The history of Sudbury

Historic moments are explored in the diminutive Lift Gallery through rarely seen and exciting local works that map the development of Gainsborough's House and Sudbury from the eighteenth century to the present day.

Gainsborough's House

Events & Lectures

Book Launches

We are thrilled to kick off our first Book Launch programme this Spring 2024 since re-opening the National Centre for Thomas Gainsborough. Come along for a glass of wine and a special evening at Gainsborough's House. Copies of each book will be available for the author to sign, specially discounted for the evening. All book launches are £12 a ticket. To book tickets for these events, please check our website gainsborough.org/whats-on



10 April, 5–6pm

Dr Steven Parissien

EA Festival: Building Britannia

Dr. Steven Parissien, will talk about his new book, *Building Britannia: A History of Britain in Twenty-Five Buildings*, with EA Festival director, Joanne Ooi. *Building Britannia* is the history of Britain told through the stories of twenty-five notable structures, from the Iron Age fortification of Maiden Castle in Dorset to the Gherkin.

Tickets are available at eafestival.com



Book Launches cont.

18 April, 6:30–8pm

Emily Howes

In Conversation with the Author of *The Painter's Daughters*

2 May, 6:30–8pm

Kate Sawyer

An Evening with Local Author of *This Family*

15 May, 6:30–8pm

Hilary Taylor

An Evening with Local Author of *Sea Defences*

30 May, 6:30–8pm

Simon Edge

An Evening with Local Author of *Anyone for Edmund?*

6 June, 6:30–8pm

Liz Trenow

An Evening with Local Author of *The Secret Sister*

30 May, 6:30–8pm

Serena Dyer

An Evening with the Author of *Material Literacy in 18th-Century Britain, A Nation of Makers*

25 July, 6:30–8pm

Barbara Segall

An Evening with the Author of *Secret Gardens of the South East and East Anglia*

◀ BUILDING BRITANNIA BOOK COVER ILLUSTRATION (DETAIL)
Digital illustration

▶ Philip de László
FRANCIS ADAM, 1935
Oil on canvas

Lectures

Take a close look at the extraordinary and often eccentric world of British portraiture during the twentieth century with Dick Humphries.

Embracing painting, sculpture, and photography, the talks include major works by artists such as Walter Sickert, Philip de László, Wyndham Lewis, Stanley Spencer, Alfred Munnings, Gwen John, Cecil Beaton, Rex Whistler, Francis Bacon, Bert Hardy, Lucian Freud and David Hockney. Tickets £20.

23 April, 5–6pm

Face Jobs: High Life

Mask and Performance from de László to Annigoni.

30 April, 5–6pm

Face Jobs: Low Life

Outsiders and No-Hoppers from Sickert to Freud.

7 May, 5–6pm

Face Jobs: Modern Life

Re-Inventing the Portrait from Whistler to Bacon.



30 June, 11am–12pm & 2–3pm

175th Anniversary Celebrations

Two lectures with Dr Steven Parissien celebrating the opening of the Chappel Viaduct and Marks Tey to Sudbury Line.

Events

5 April, 2–4pm

Afternoon Tour with Sandra de Laszlo

An exclusive tour of the *Philip de László: Master of Elegance* exhibition.

19 April, 10am–1pm

Draw like de László

with Ione Smedemark

Learn the art of portraiture drawing using techniques used by de László.

4 May, 10am–4pm

Life Drawing with Sue Marsdon

On the first Saturday of every month in the Hills Room.

9, 16 & 23 May, 5–6pm

Writing the Landscape

with Justin Hopper

Three workshops full of strategies and ideas for adding landscape to your prose or poetry.

17 May, 10am–1pm

Paint like de László (portrait)

with Ione Smedemark

Painting the portrait from life utilising de László's colour palette.

17 May, 9–10am

Master of Elegance: Breakfast Tour

with Katherine Field

Discover behind the scenes of the *Philip de László: Master of Elegance* exhibition followed by hot drinks and croissants.

14 June, 10am–1pm

Paint like de László (full figure)

with Ione Smedemark

Enjoy a morning of painting the clothed figure from life.

18 June, 2–4pm

Afternoon Tour with Sandra de Laszlo

An exclusive tour of the *Philip de László: Master of Elegance* exhibition.

Family Events

2 April, 10am–1pm drop-in

Tom's Tuesdays:

'Spring is sprouting' – Celebrate spring

9 April, 10am–1pm drop-in

Tom's Tuesdays:

'Famous Faces' – From Presidents and Princesses to actors and aristocrats

28 May, 10am–1pm drop-in

Tom's Tuesdays:

'Book Making like Gravelot' – Discover Gravelot and produce your own books & frames using his ideas

Art Classes

Sundays 21 & 28 April; 5, 12, 19 & 26 May.

'Face to Face' with Juliet Lockhart

A 6-week, half-day textile course with Juliet Lockhart inspired by the Philip de László exhibition. £230pp.

Print Workshop

Courses and Taster Days – become a Print Workshop Member for priority booking and discounts. More Print Workshop Taster Days coming soon!

5–7 April, 10am–4pm

Etching with Jason Hicklin

20–21 April, 10am–4pm

Wood Engraving with Blaze Cyan

Fridays; 3, 10, 17, 24 & 31 May; 7 June,

10am–4pm

Printmaking Foundation Course

11 May, 10am–4pm

Introduction to Cyanotype with Karina Savage

For more Information, prices and to book: gainsborough.org/whats-on

Timothy & Mary Clode Gallery + Sudbury Gallery

Revealing Nature: The Art of Cedric Morris and Arthur Lett-Haines

6 July – 3 November 2024

PHILIP MOULD
& COMPANY



From July the main exhibition at Gainsborough's House will celebrate the colourful and unique art of Cedric Morris (1889–1982) and Arthur Lett-Haines (1894–1978), who lived, worked and taught in the local Suffolk countryside.

The exhibition will chart the fullness of their extraordinary and intertwined careers as artistic and romantic partners: from the 1920s and 30s, when they were central to the bohemian and avant-garde scenes of Newlyn, London and Paris,

to the 1940s and beyond, when the pair were based in Suffolk, cultivating a haven for like-minded creatives and teaching young artists including Lucien Freud and Maggi Hambling.

Spread over two floors of the new galleries, the exhibition will bring together a large selection of paintings, drawings and sculptures from public and private collections.

▲ FLOWERS IN A
PORTUGUESE LANDSCAPE
Oil on canvas

David Pike Drawings Gallery

Sir Cedric Morris Florilegium

Winner of the national Finnis Scott
Foundation Botanical Art Award.

6 July – 3 November 2024

Dr Siân Dawson inspired the idea and coordinated the illustrated catalogue of paintings by leading botanical artists to illustrate a 'Florilegium' of the unique award-winning irises bred by Sir Cedric Morris (1889–1982), artist, gardener and iris breeder, based at Benton End, Hadleigh, Suffolk. Morris propagated the 'Benton End' bearded irises between 1933–60, which are now held in the National Plant Collection cultivated by Sarah Cook, GM, horticultural expert and former head gardener at Sissinghurst, Kent.

The *Sir Cedric Morris Florilegium* consists of 30 botanical watercolour paintings, meticulously observed and accurately recorded of 'known and growing today' cultivated varieties of bearded iris, that have been painted by the country's leading Gold Medal winners from the Royal Horticultural Society.

▼ Myumi Hashi
BENTON EVORA
Watercolour

► Gillian Barlow
BENTON HADLEIGH
Watercolour



The Finnis Scott Foundation Botanical Art Award is the most valuable award of its kind. Dr Dawson was delighted to receive such a prestigious award, considered the highest accolade on behalf of all the artists, who so graciously donated their paintings to be retained by Gainsborough's House and considered the finest florilegium of iris paintings worldwide. The Gainsborough's House Trustees accepted the collection as a gift to be held in perpetuity alongside Sir Cedric Morris' private art collection.

This exhibition is the first time the *Sir Cedric Morris Florilegium* complete collection has been exhibited together in its entirety.



The Finnis Scott
Foundation

Exhibitions, events & lectures

April–July 2024

FOR INFORMATION, PRICES AND TO BOOK: gainsborough.org/whats-on

	MARCH	APRIL	MAY	JUNE	JULY
EXHIBITIONS					
Philip de László: Master of Elegance 23 March – 23 June					
Hubert-François Gravelot: Designing the Georgian Book 23 March – 23 June					
Henry Driver: Water Portals 23 March – 23 June					
Revealing Nature: The Art of Cedric Morris and Arthur Lett-Haines 6 July – 3 November					
Sir Cedric Morris Florilegium 6 July – 3 November					
Gainsborough Gallery Permanent					
Silk Gallery Permanent					
FAMILY EVENTS (find out more at 'Family Workshops' on our website)					
Tom's Tuesdays: 'Spring is sprouting' 2 April					
Tom's Tuesdays: 'Famous Faces' 9 April					
Face to Face Textile Course with Juliet Lockhart 21 April – 26 May					
EVENTS (see website for more events and the latest details)					
Afternoon Tour with Sandra de Laszlo 5 April					
Draw like de László 19 April					
Life Drawing with Sue Marsdon 4 May					
Writing the Landscape with Justin Hopper 9, 16 & 23 May					
Paint like de László (portrait) 17 May					
Master of Elegance: Breakfast Tour with Katherine Field 17 May					
Paint like de László (full figure) 14 June					
Afternoon Tour with Sandra de Laszlo 18 June					
LECTURES					
Face Jobs: High Life with Dick Humphries 23 April					
Face Jobs: Low Life with Dick Humphries 30 April					
Face Jobs: Modern Life with Dick Humphries 7 May					
175th Anniversary Celebrations of the Opening of the Chappel Viaduct and Marks Tey to Sudbury Line 30 June					
PRINT WORKSHOP COURSES (become a Print Workshop Member for priority booking and discounts)					
Etching with Jason Hicklin 5 – 7 April					
Wood Engraving with Blaze Cyan 20 – 21 April					
Printmaking Foundation Course 3 May – 7 June					

All details correct at time of going to press. Please check website for latest information and updates.

The Museum

Thomas Gainsborough's childhood home

The permanent collection within the original Grade-I listed House tells the story of Gainsborough, his influences and legacy.

In 1958 Gainsborough's House Society was formed to purchase the Georgian house and establish it as a centre for Thomas Gainsborough. The museum opened to the public in 1961.

The oldest visible element of the House is an oak doorway leading into the entrance chamber, which may date back to as early as 1490. Thomas Gainsborough's parents, John and Mary, probably moved here in 1722. The building was kept in family ownership until 1792, when it was sold at auction and described as 'a most excellent Brickt Mansion'.

Today, our permanent collection encompasses the whole career of Thomas Gainsborough, from early



© ANNE PURKISS



© ANNE PURKISS



© HUFTON + CROW



© ANNE PURKISS

portraits and landscapes painted in Suffolk during the 1750s, to later works from his Bath and London periods.

The early part of Gainsborough's career is mapped in the exquisite Parlour.

Experience the fascinating Finnis Scott Painting Room, showcasing painting, drawing and printmaking practice through the eighteenth century.

Discover Gainsborough's love of music in the Music Room on the first floor.

Suffolk-based artists, Cedric Morris and John Constable are also explored throughout the House.

Find our Room Sheets and Books in the House to gain more insight into our collections.



© HUFTON + CROW

The Watering Place
Our café

The Watering Place café is open 10am to 5pm every day.

Enhance your Gainsborough's House experience by visiting our on-site café, open for visitors and the local community with:

- locally sourced, freshly prepared, seasonal food
- light lunches, cakes, pastries, and a wide range of snacks
- teas and coffees, chosen for quality and taste

Whether you're here visiting and would like a bite to eat or you're in town and just passing by, our café and terrace are open to all.

Our catering partner, Stellar Catering, also host an array of exciting events throughout the year.

Check our website for more details on how to book gainsborough.org/your-visit/the-watering-place-cafe

Stellar Catering Ltd

Follow the crinkle-crinkle wall
Our gardens



© ANNE PURKISS

At the heart of our site, the courtyard garden with a 400-year-old mulberry tree, as well as a quince and medlar tree, includes a new crinkle-crinkle wall in the Suffolk vernacular manner, built of local handmade brick.

As part of an outreach project at HMP Hollesley Bay, prisoners carved their own bricks to embellish and enhance the red-brick design. A dedicated group of garden volunteers look after the heritage plot year round.

Themed gifts, books, food and textiles
The Gainsborough's House Shop

Our shop is located on the corner of Gainsborough Street and Weavers Lane. It is full of items for all ages – from unique gifts, books and souvenirs to toys, food and wine.

A visit to Gainsborough's House just wouldn't be complete unless you included the shop as part of your trip to Sudbury.

Just like the exhibitions and displays in the galleries, the products in the shop are also carefully curated. They might be inspired by a Gainsborough painting or a feature of our site, like the Mulberry Tree. When you are in Gainsborough's House shop, you can buy something that really connects you to your visit.

We ring the seasonal changes and try to bring you gifts you don't often see,

in particular, our range of products inspired by Gainsborough's letters. He had a great way of summing up a situation in one sentence!

You can also see our range and shop online at gainsborough.org/our-shop



© ANNE PURKISS



Landscape Studio
Stunning views of Suffolk



© ANNE PURKISS



Landscape Studio

Experience panoramic views over Sudbury; Gainsborough's Suffolk countryside. Don't miss this vantage point on the top floor of the Galleries.

Camera Obscura

Our permanent Camera Obscura, situated in the stunning Landscape Studio and operated by volunteers allows visitors to gain a 360-degree view of Gainsborough's hometown and the landscapes which inspired him.

A predecessor to modern photography, discover how this centuries-old contraption works.

For Camera Obscura opening times, please see our website gainsborough.org/your-visit



Hiring the studio

A beautiful yet functional space for community events, families and schools to further enrich their visitor experience.

This room is available for hire in addition to the Hills Room, a multi-purpose space above the café. We welcome group and commercial bookings for this space. Catering for events can also be arranged.

For more information on how to hire the studio, please contact mail@gainsborough.org



Print Workshop
Create your own masterpieces

We welcome artists, students and print enthusiasts of all abilities to our well-equipped, friendly and professional Print Workshop. Techniques available to explore include relief printing, etching, screenprinting and lithography.

The Print Workshop run specialised courses throughout the year to offer beginners an insight into new techniques or to invite experienced printmakers to elevate their skills.

gainsborough.org/print-workshop



Join our Print Workshop

As a Print Workshop member gain access and technical support, with basic materials included. You will also get priority booking for all courses.

Memberships start at just £120 for 3 months, perfect if you have a short project to complete or, £240 for an entire year of printmaking!

pws@gainsborough.org

Introducing

Phoebe Scott

Learning Apprentice

A great deal of thought goes into the learning programme and events at Gainsborough's House.

We are a small team of Steph, me, and a fantastic group of talented and helpful Volunteers. I am grateful for what they have all taught me during my time here so far.

Over the last year, we have welcomed over 1,200 school children. It has been great getting to work with the different exhibitions and developing bespoke workshops and resources for them.

The Maggi Hambling exhibition in Summer 2023 was a particular highlight for us, having lots of visiting schools getting creative with experimental painting all inspired by Maggi's work.

We also recently had a group taking part in a Rebecca Salter focused workshop. They explored repeating patterns and had a go at creating a Salter inspired layered artwork thinking carefully about mark-making.

Schools are just one portion of what we do as part of the Learning Team and there's so much more I could tell you about!

It truly has been a pleasure to have such a variety of exhibitions to work with and to be part of the ever-expanding learning programme of Gainsborough's House.

by Phoebe Scott



For younger visitors

Families & Learning

The Art Cart

What is there for families to do in the galleries? Our very special Art Cart provides exciting activities for all ages, all free of charge. Add to our community sketchbooks, make your own crafts or take an activity bag around the exhibitions – let's get creative!

Tom's Tuesdays

For the whole family, Tom's Tuesdays run every Tuesday of the school holidays. Drop in and get involved with some creative fun for all ages. In April half term, discover de László's famous faces and join us to celebrate spring.

Saturday Art Clubs

Drop your budding artist off on the last Saturday of every month for two hours of creativity in our beautiful Landscape Studio. Led by artists, for children, with a focus on different techniques each month from painting, drawing, collage, and more; for ages 7–11.

▼ THE ART CART



Our offer for schools

We offer a wide variety of workshops for all ages. These range from exploring our exciting Camera Obscura; printmaking, local history, and art, as well as a My First Gallery Visit session for our younger visitors in nursery. Secondary schools can also access gallery talks, workshops and specialist printmaking facilities.

There are further details about our school offer on our website gainsborough.org/learning/schools/

My Favourite Gainsborough

Gentleman with a Dog

Katherine Field, Curator of *Philip de László: Master of Elegance*

As curator for the British Sporting Art Trust, I had the great pleasure of including this wonderful portrait in the exhibition *The Good Companions* at the National Horse Racing Museum in 2020.

Former Gainsborough's House Director Mark Bills was the first lender to say 'Yes' – always a wonderful moment for a curator!

This is Gainsborough's earliest identified portrait which includes a dog. The spaniel depicted highlights his owner's wealth and position as a member of the landed gentry, since owners of sporting dogs in the second half of the 18th century were required to pay a five-shilling tax for each one. This is about two days' wages for a skilled tradesman.

Dogs were also used by the artist to indicate the sitter's "sensibility" or closeness to the natural world through a love of animals. While the sitter remains unidentified, he is probably a Suffolk patron who commissioned the portrait before the artist departed for London to become an apprentice in the studio of Francis Hayman (1708–76).

Gainsborough painted over eight hundred portraits in his career, but only forty of these included dogs. This seems a pity given the obvious joy the artist took in depicting them, as shown in the portrait of his own *Tristram and Fox* now on display at Gainsborough's House. It may simply have been a matter of commerce since Gainsborough charged more for portraits that included a horse but not for a dog!

► Thomas Gainsborough
(1727–88)
GENTLEMAN WITH A DOG
Oil on canvas



How you can help

Support us

Gainsborough's House is a registered charity so without the support of generous individuals and organisations, we would be unable to display our distinguished and growing collections, realise our vibrant exhibition programme, or run our many learning programmes with a diverse array of young people.

Donate

Every donation we receive, no matter the size, helps to meet our running costs and programming to ensure there is something for everyone to enjoy. By making a gift, you can help make a vital contribution towards all of the work we do at the National Centre.

You can donate to Gainsborough's House via tickets.gainsborough.org

If you would prefer to donate a different way, please contact mail@gainsborough.org

We appreciate your support greatly.



Volunteer

As a registered charity, Gainsborough's House relies on the contribution of its amazing volunteers who help with a variety of roles across the whole site, including gallery stewarding, guided tours, learning workshops, administration, retail and events.

If you're interested in becoming a volunteer with us, please see our website for details on how to sign up: **gainsborough.org/get-involved/volunteer**



gainsborough.org/get-involved



Become a Friend

Gainsborough's House is a very special place that exists to promote the wider knowledge, appreciation, and enjoyment of the art of Thomas Gainsborough.

Your support will really make a difference, especially since our re-opening after a transformational refurbishment.

We offer a range of annual membership levels – enjoy the benefits and feel good knowing that being a Friend of Gainsborough's House helps keep us alive; we hope you'll join us on this journey!

Become a Friend from £45

Enjoy unlimited free admission to our collections and exhibitions and more.

Become a Medlar from £65

Including exclusive previews of our exhibitions and more.

Become a Quince from £100

Bring a free guest when you visit, enjoy free Breakfast Tours and more .



Become a Patron

Being a Patron at Gainsborough's House promotes heritage & culture in so many ways.

By supporting Gainsborough's House you are helping us to stage the world-class exhibitions and events of which we are so proud. You are helping us to maintain our Grade I-listed historic house as well as the splendid, 2022 extension, and enabling us to grow our activities and outreach programmes.

Like many of the UK's museums, only a quarter of our income comes from ticket sales. As a result, we rely enormously on the generosity of private individuals.

So please, become a Patron today. Without our Patrons' support, we simply wouldn't be where we are today, and certainly wouldn't be able to achieve all of the impressive things we are currently planning. At Gainsborough's House, your help will make a crucial difference.

For further details on becoming a Patron of Gainsborough's House, please contact: **patrons@gainsborough.org** or **phone 01787 372958**

Gainsborough's House

Admission

Opening times

Open every day 10am–5pm.

Closed between Christmas and the New Year, Good Friday.

Tickets

Adults: £16.50 (with Gift Aid)

18's and under: Free

Contact us

Gainsborough's House

46 Gainsborough Street,
Sudbury, Suffolk CO10 2EU
(entrance on Weavers Lane)

01787 372958

mail@gainsborough.org

gainsborough.org

Follow us

@GainsboroughsHouse



Cover image:

Philip de László (1869–1937)

ANNY ALHERS AS MADAME DUBARRY

Oil on canvas



Travelling to Sudbury

How to find us

Gainsborough's House is situated in the town centre of Sudbury, in Suffolk. The House is on Gainsborough Street, but access to the main entrance, galleries, café and shop are on the adjacent Weavers Lane.



By train

- Travel to Sudbury Railway Station.
- Trains from London Liverpool Street every hour.
- Station is a 10 minute walk.

By car

- Limited on-street spaces on Gainsborough Street.
- Car parks: North Street, Kingfisher Leisure Centre and Sudbury Railway Station; all within 10 minutes walk.

Accessibility

gainsborough.org/your-visit/accessibility/

Charity no: 1170048

Reg'd Co. no: 10413978

© Gainsborough's House

gazette design: wilson-design.co.uk